



SM570 / SM580

BUILD GUIDE V1.0

SCREWS

The SM570/580 comes with a total of 3 different screws.
For the purposes of this guide we will assign a unique color to each of the screw to signify their locations in this guide.



GREEN M3X6 PAN HEAD
Securing PCIe Cards



RED M3 x 5mm FLAT HEAD
Chassis Top Assembly
Rear AC Inlet
SSDs (on SSD bracket)
SFX PSU Mount Bracket

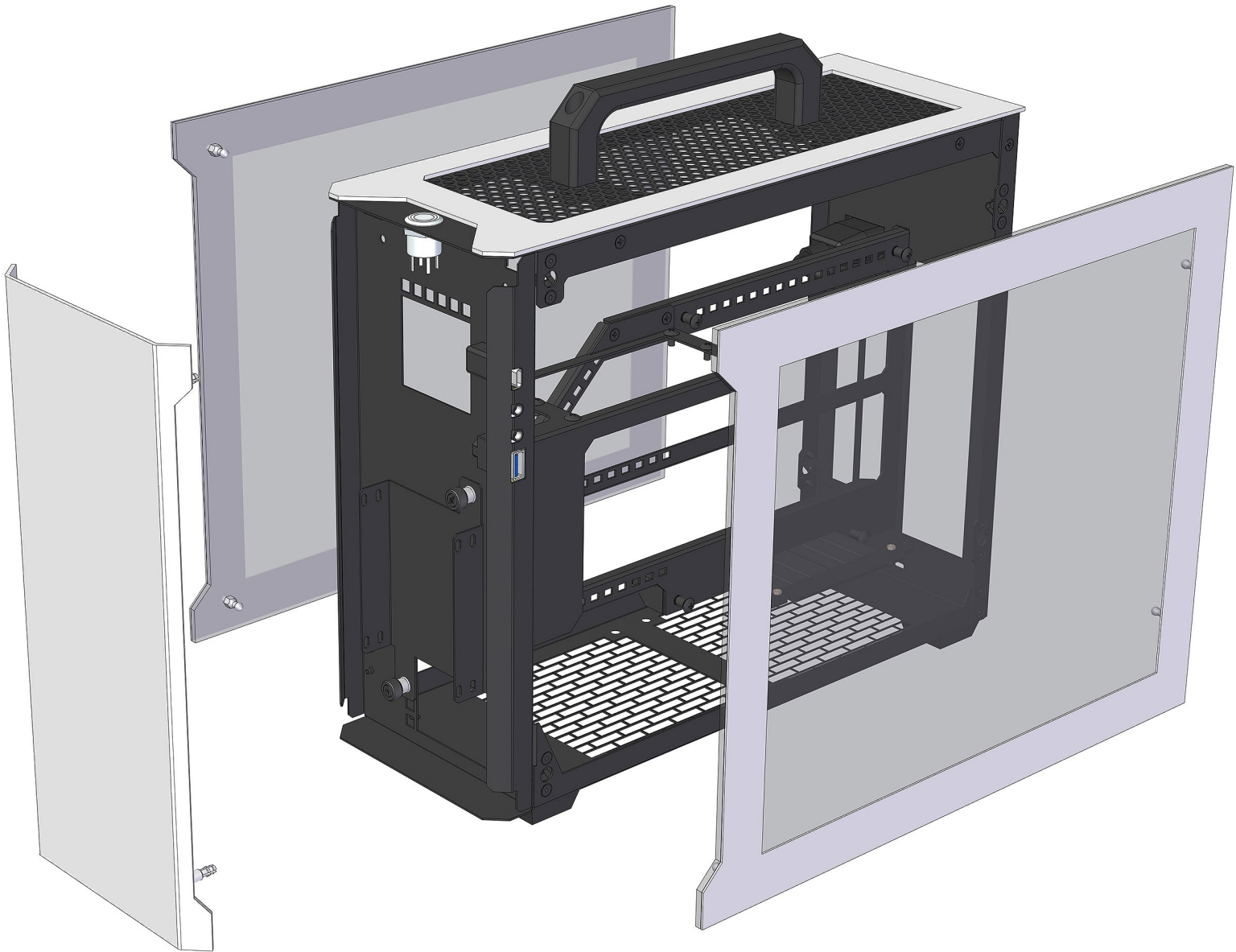


VIOLET M3.5 TRUSS HEAD
Motherboard
Power Supplies

EASY OFF PANELS

The front and side panels (vented, unvented, and window) all have tool-less removal via their ball-stud mounting points. Careful, panels may be very tight on the first few times on/off.

CAUTION: The Top Panel is attached with screws, see next page.

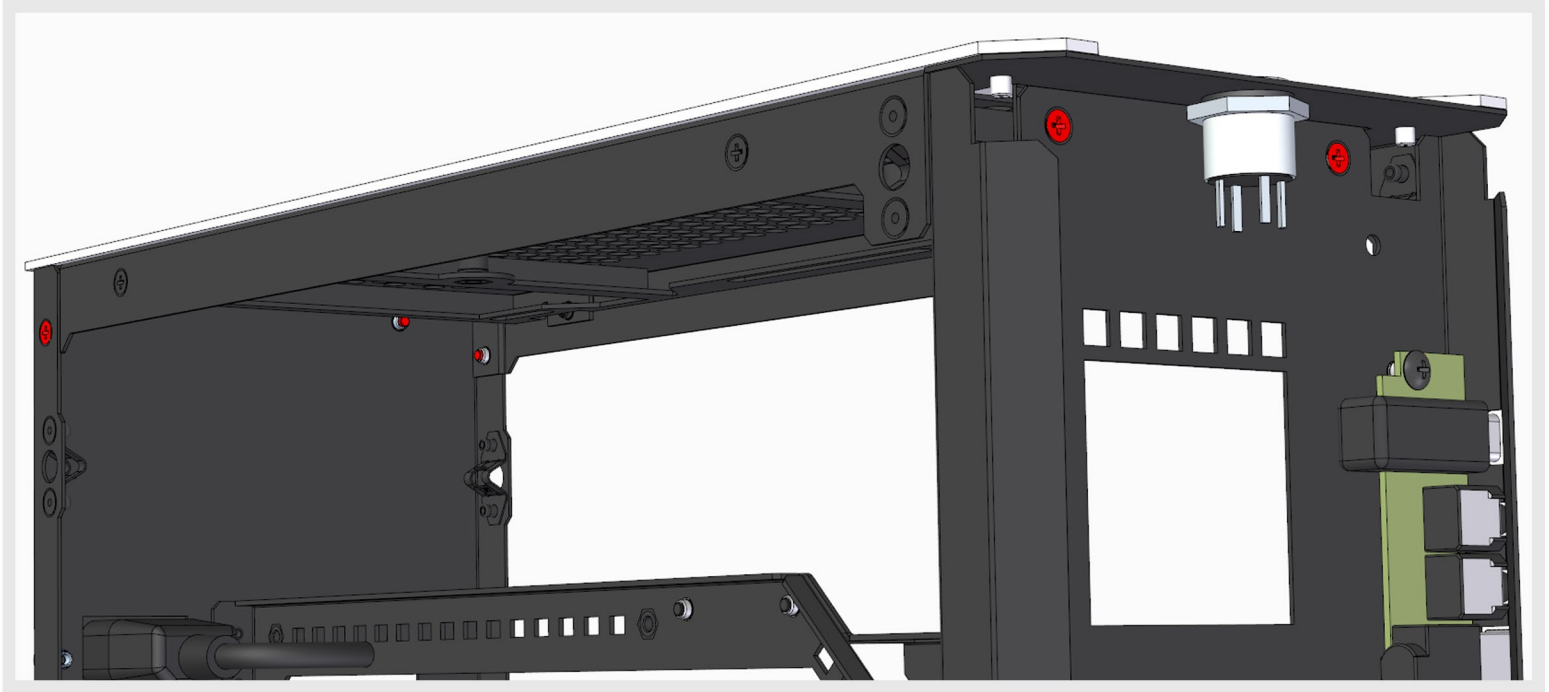


RE-ASSEMBLY NOTES

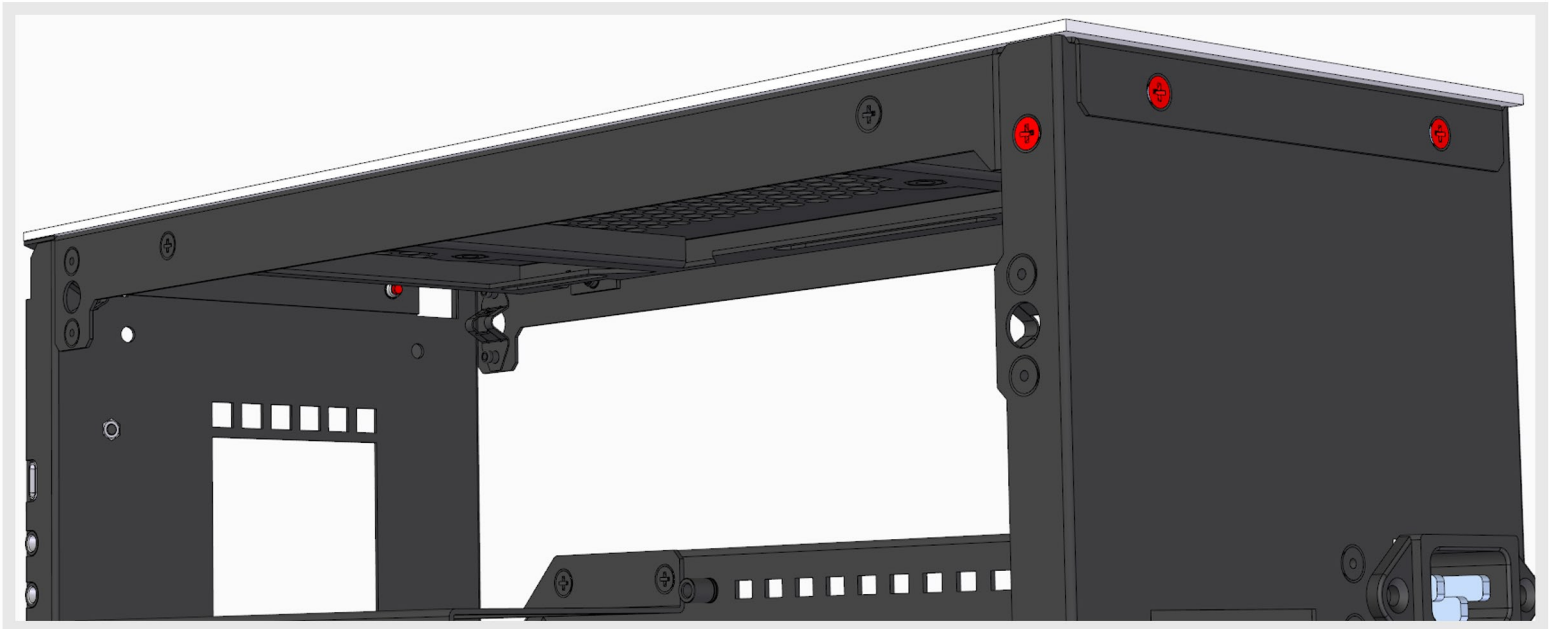
Side panels are reversible to either side.

Front Panels can be installed with either end at top or bottom.

THE TOP PANEL



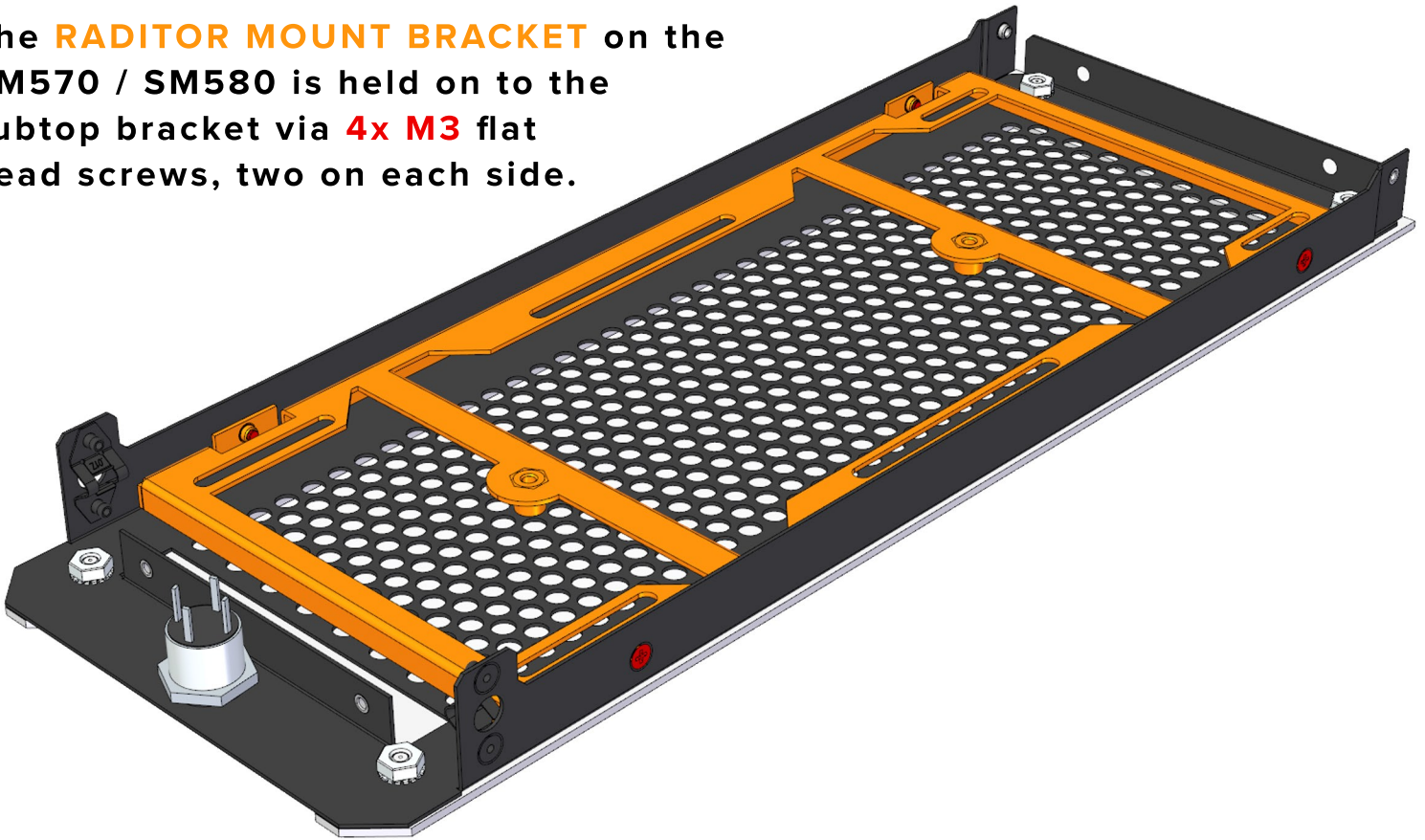
The top panel on the SM570 / SM580 is held on via **6x M3** flat head screws.
2x are located by the power switch in the front
2x are located on the rear top edge of the case
2x are located on the top rear corners of each side of the case (1x per side)



REASSEMBLY NOTE: When putting the top panel back on the case it is recommended to position the tabs on the rear corners first, then place the rear flange onto the outside of the frame. This will position the front flange

RADIATOR MOUNT

The **RADITOR MOUNT BRACKET** on the SM570 / SM580 is held on to the subtop bracket via **4x M3** flat head screws, two on each side.



REINSTALLATION NOTE: Please ensure that the two “bulges” for the handle mounting hardware are facing the front of the case when installed. If these are facing to the rear the handle will not be able to be installed.



BOTTOM FANS

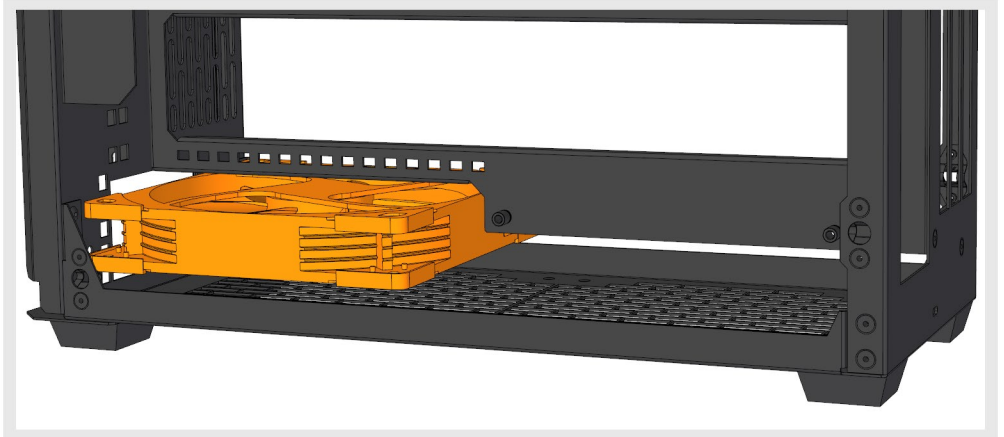
BOTTOM FANS ARE RECOMMENDED TO BE INSTALLED FIRST

You may run into troubles getting them into the case if you install the PSU, motherboard, or GPU before the fans.

STEP 1

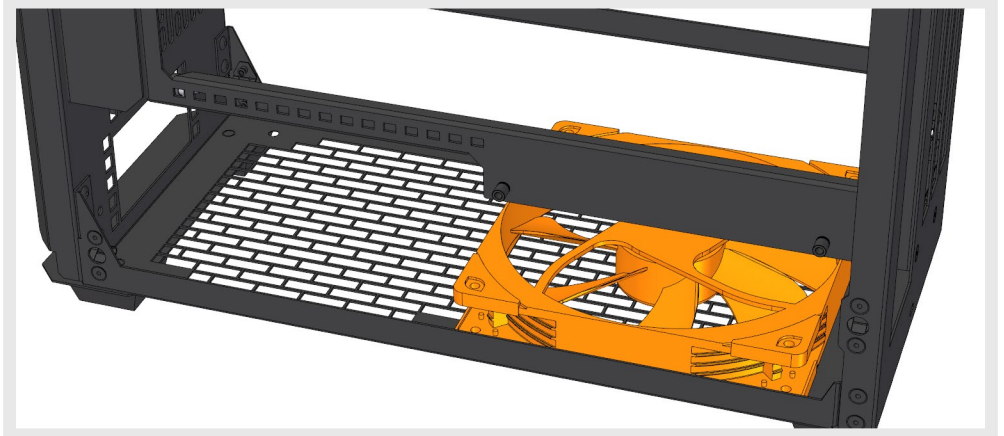
Slide first fan into the case at the bottom front.

Be sure to double check your fan blade direction matches your desired airflow direction!



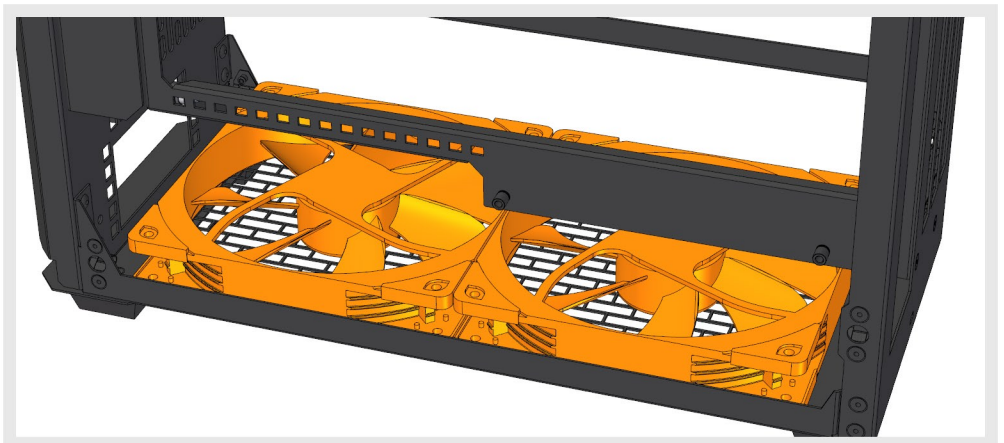
STEP 2

Slide first fan to the back of the case



STEP 3

Install second fan into the front bottom of the case.

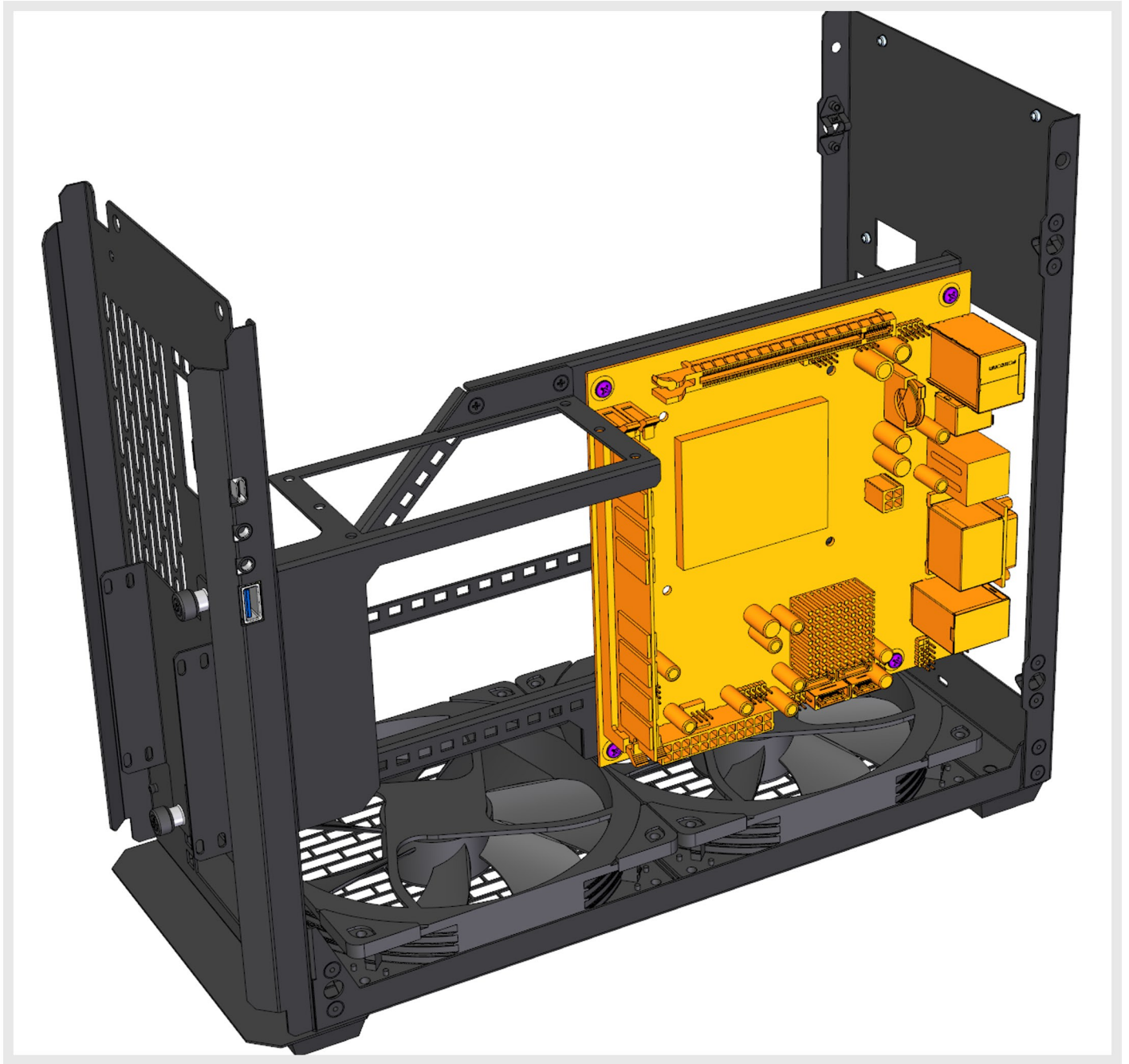


Fan mounting screws are not included.

Countersunk holes are for KB5 head screws. Said screws are available on Amazon or NewEgg if not included with your fans.

Dust filters are available from Demci-filter.

MOTHERBOARD



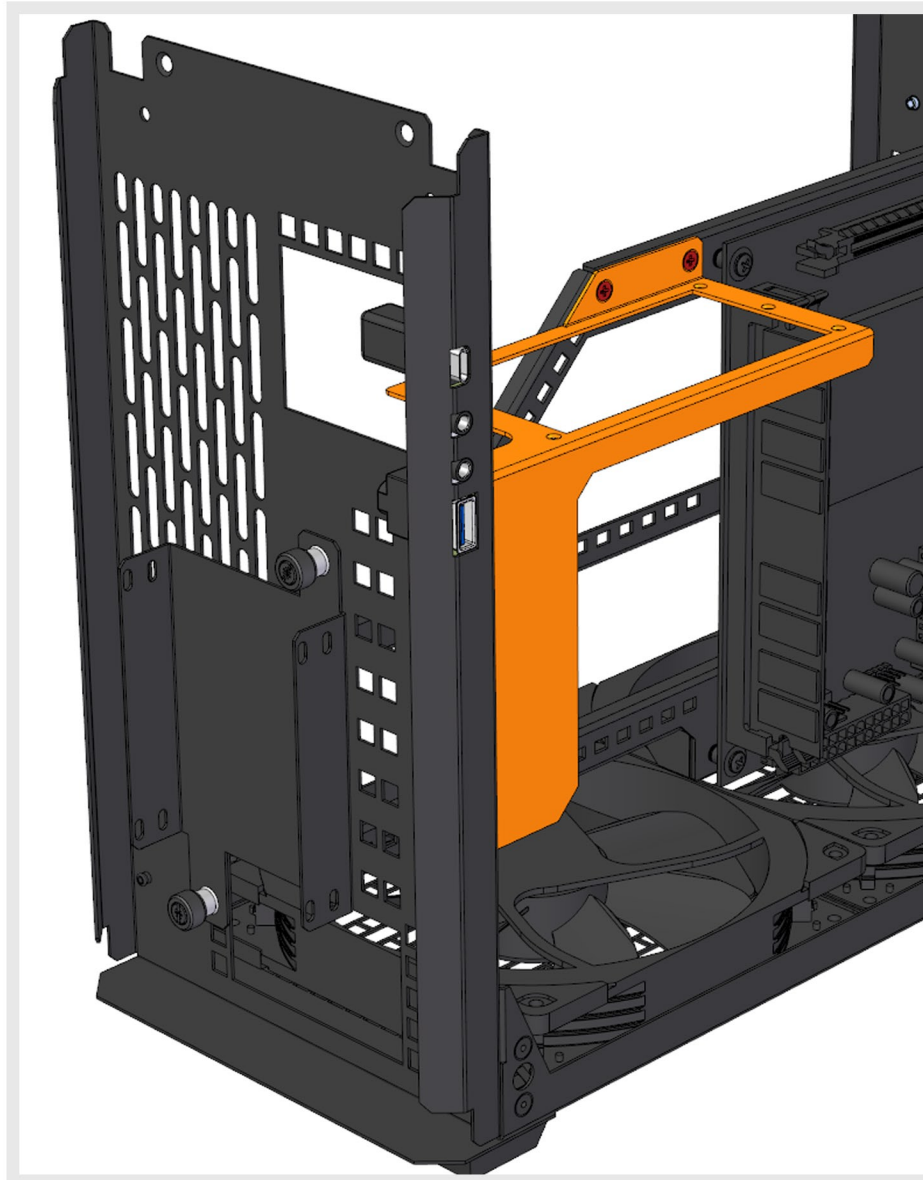
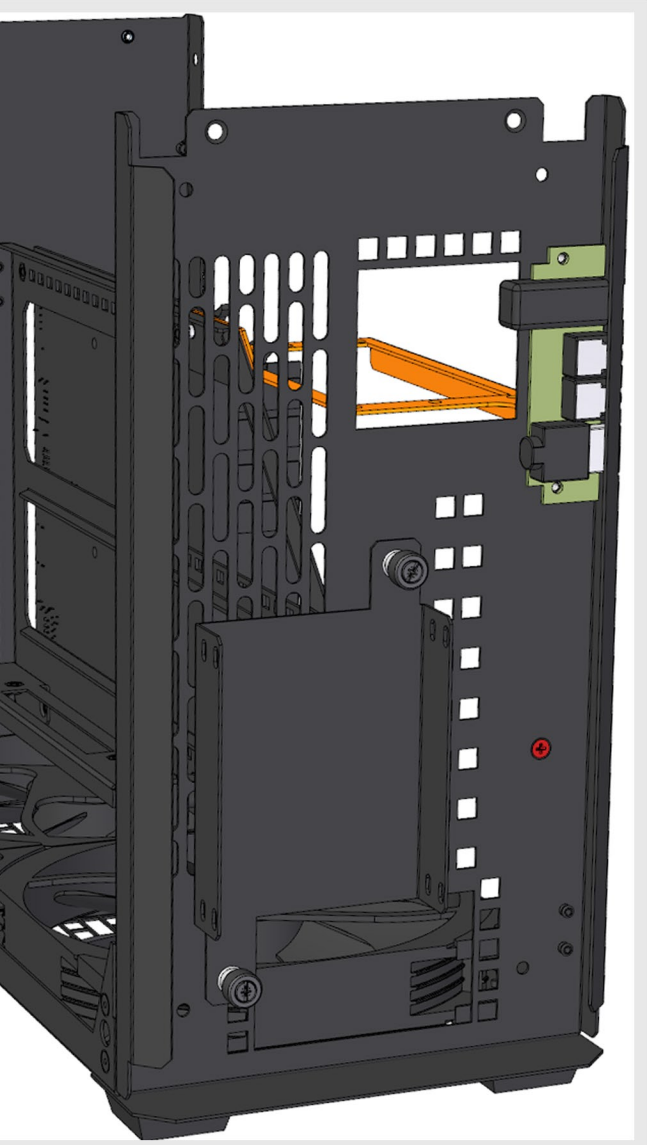
The motherboard is mounted with **4x M3.5 TRUSS HEAD** screws.

Installation instructions for your CPU, CPU cooler, and RAM are covered by your respective Motherboard and AIO Liquid Coolers user manuals.

Don't forget to install your IO shield!

POWER SUPPLY

The SFX PSU mounting bracket is **secured to the case spine via 2x M3 flat head screws**. These screws are located at the top middle of the spine, next to the motherboard corner standoff.



There is also **1x M3** flat head screw **behind the front panel** of the case.

Later revisions of the SM570 and SM580 have **2x M3** behind the front panel.

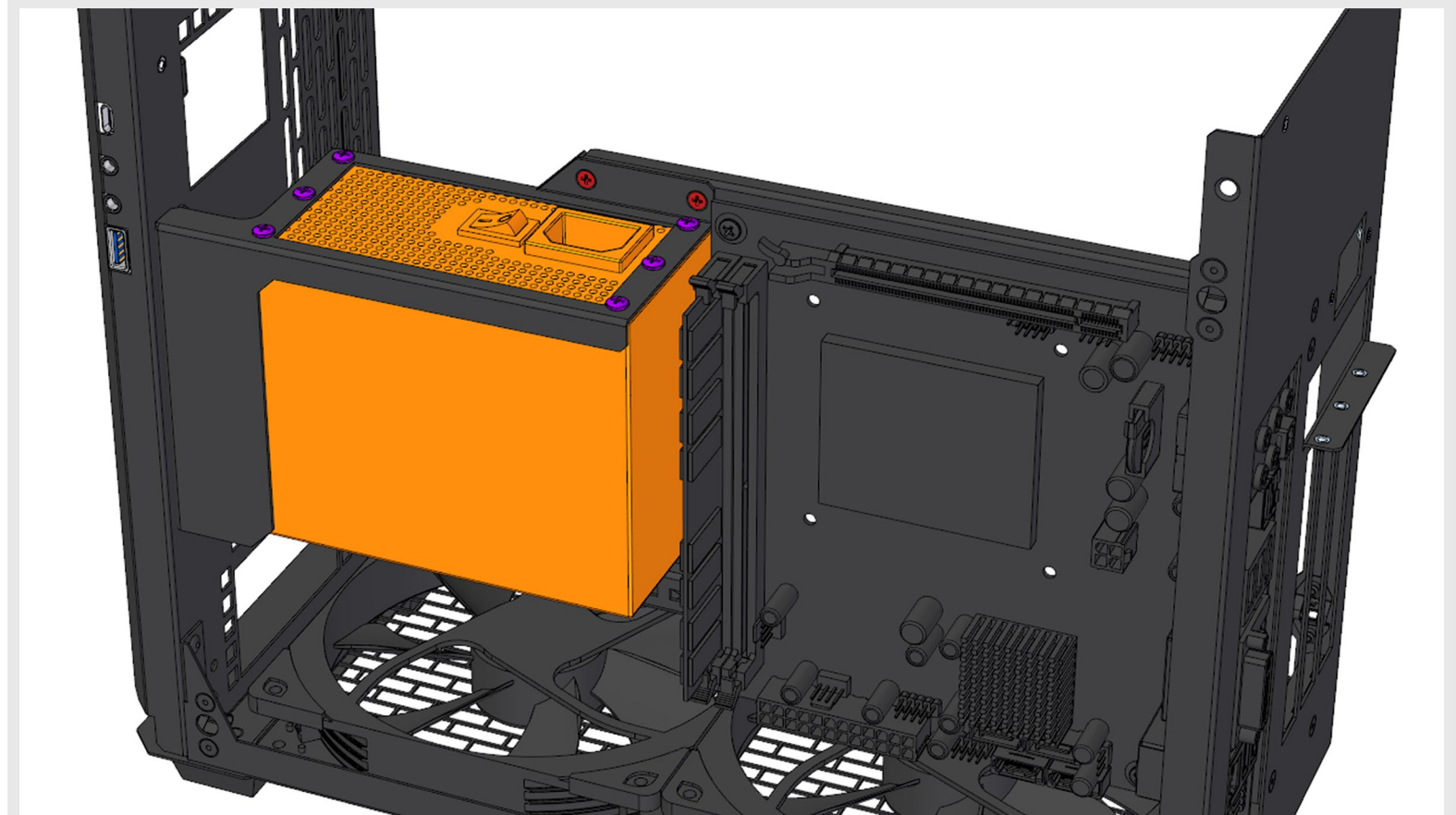
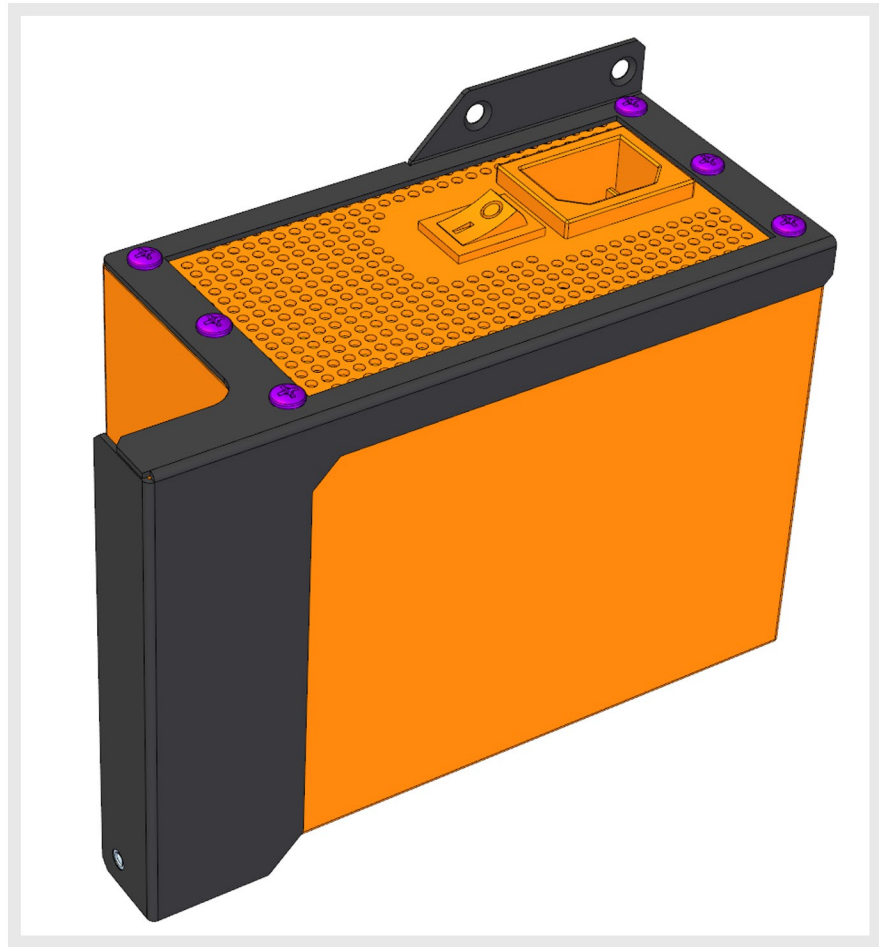
POWER SUPPLY

The SFX PSU can be attached to the PSU Mounting Bracket with up to **6x** of the the included **M3.5 TRUSS HEAD** screws.

Note that not all SFX Power Supplies have all 6x holes.

It is recommended to attach your power supplys modular cables at this time, and loosely route them.

Once the SFX PSU is attached to its mounting bracket, and the fanout cables are routed into position, the SFX PSU can be screwed back in via the **3x M3** flat head screws removed in the last step.

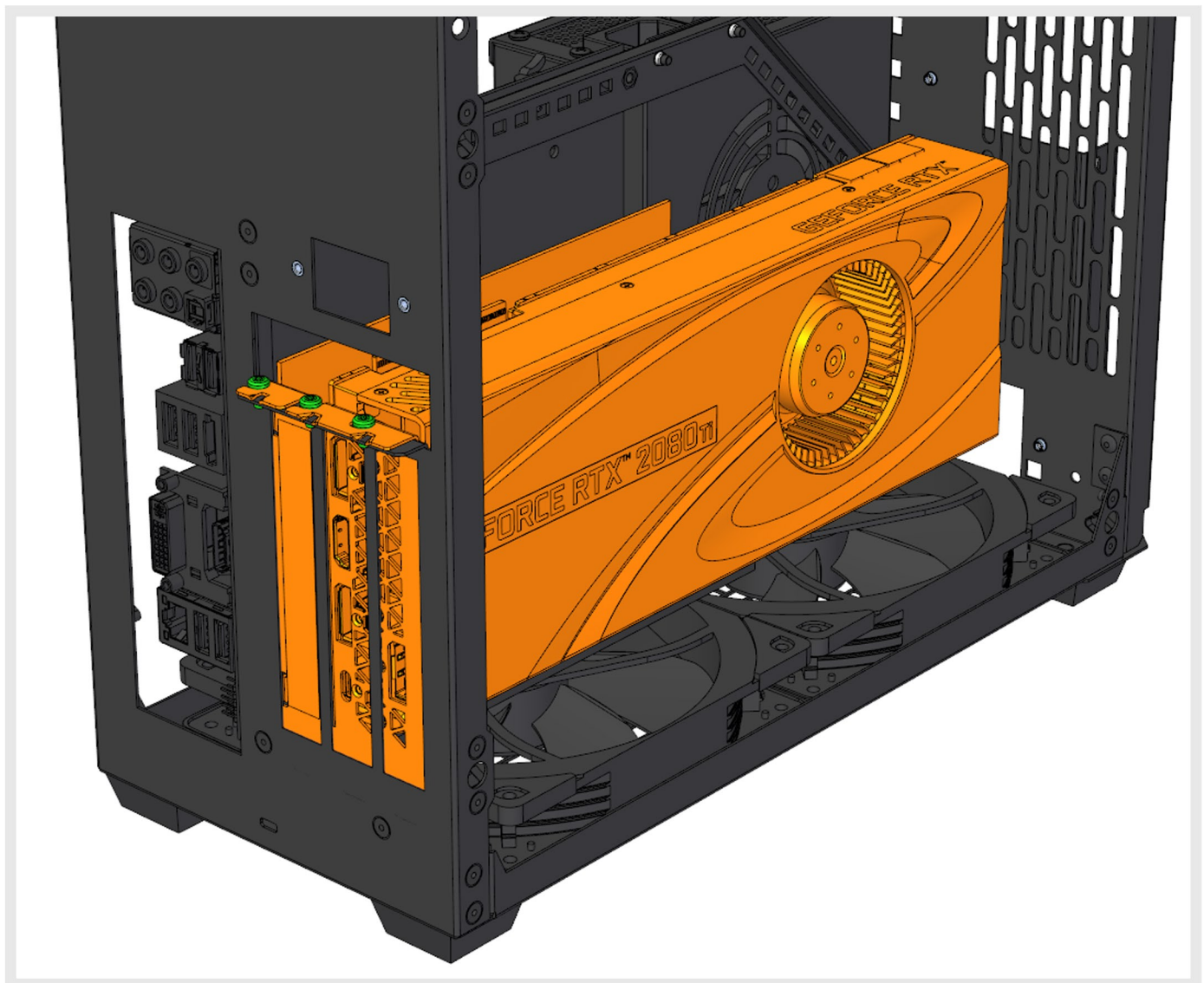


PCIe CARDS

All GPU and other PCIe cards (if using bifurcated riser) should now be installed into the case. The PCIe cards are mounted by **2x** or **3x M3 PAN HEAD** screws on the SM570 or SM580 respectively.

Note that the current riser in the SM570 and SM580 is only compatible with PCIe 3.0 and PCIe 2.0. If you have a PCIe 4.0 motherboard and GPU it is recommended to install the GPU into the motherboard outside of the case, power it on, and set the BIOS to use PCIe 3.0 mode.

Support for bifurcation or other riser issues should be directed to support@sliger.com or call our support line at +1 775 356 5595.



Power Cords

STANDARD MOUNT

The power cord should be installed by pulling it in from the rear through the power cord mount hole, passing through the cable mounting bracket. The inlet and metal plate are then mount via **2x M3 Flat Head** screws as shown.

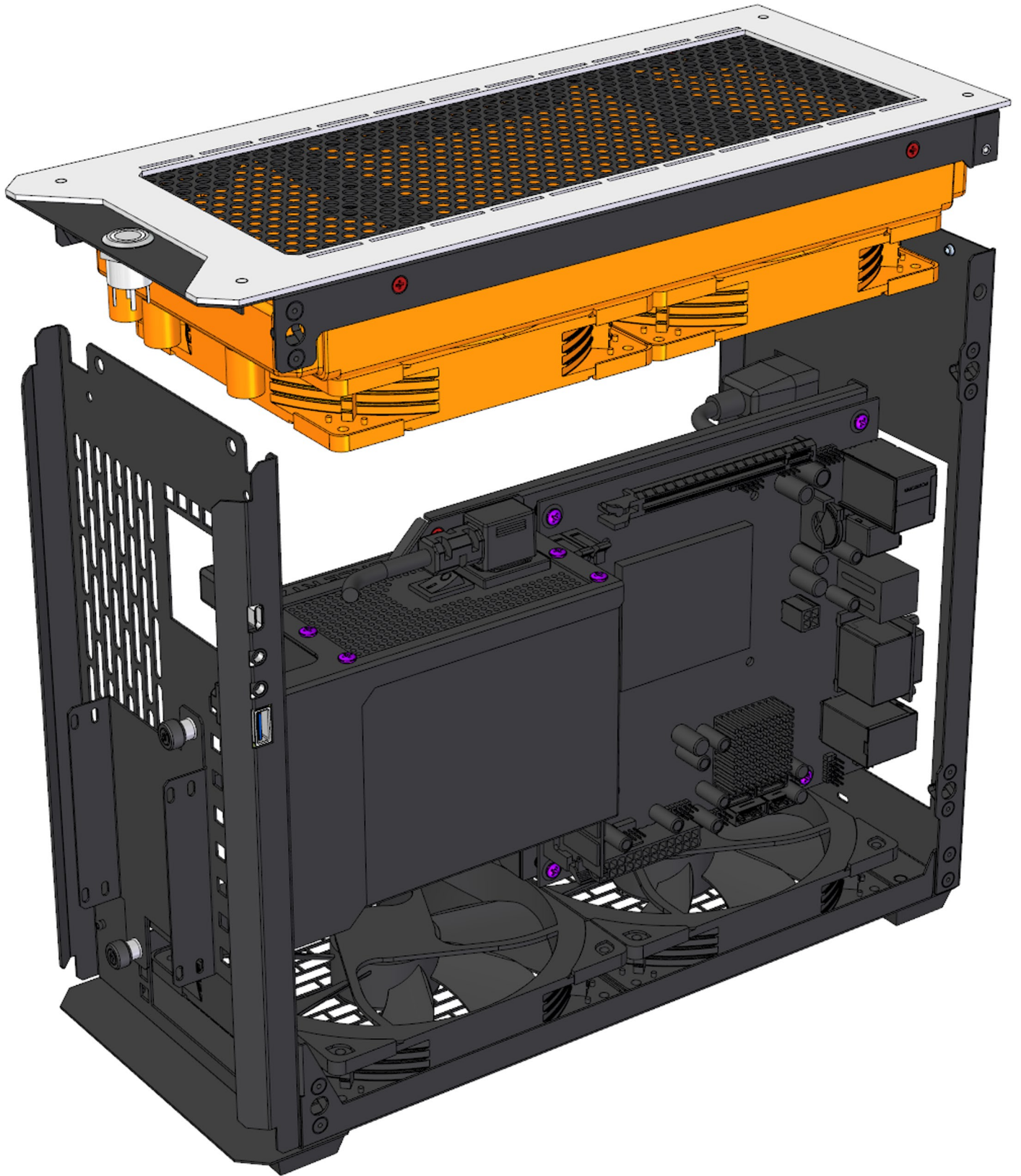


PIGTAIL MOUNT

The cord should be installed by pulling it in from the rear through the power cord mount hole. With the cable partially out of the case the cable grommet should be clipped on to the power cord, and then clipped into the metal plate. The metal plate can then be mounted via **2x M3 Flat Head** screws.

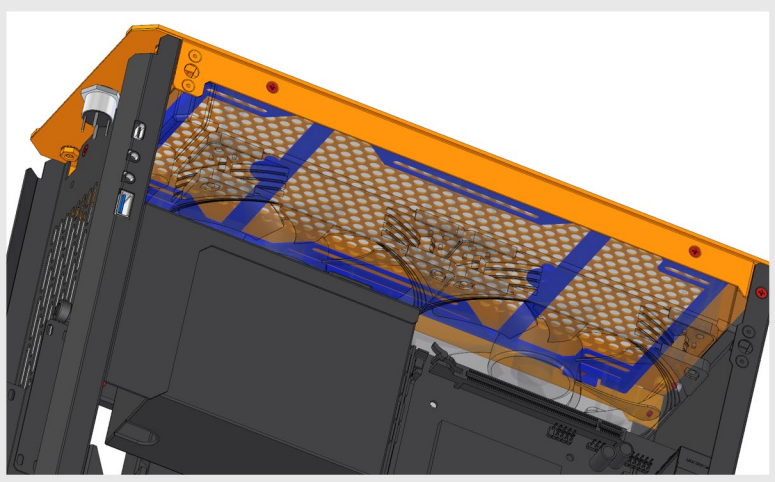
CONTINUED

INSTALLING THE TOP



INSTALLING THE TOP

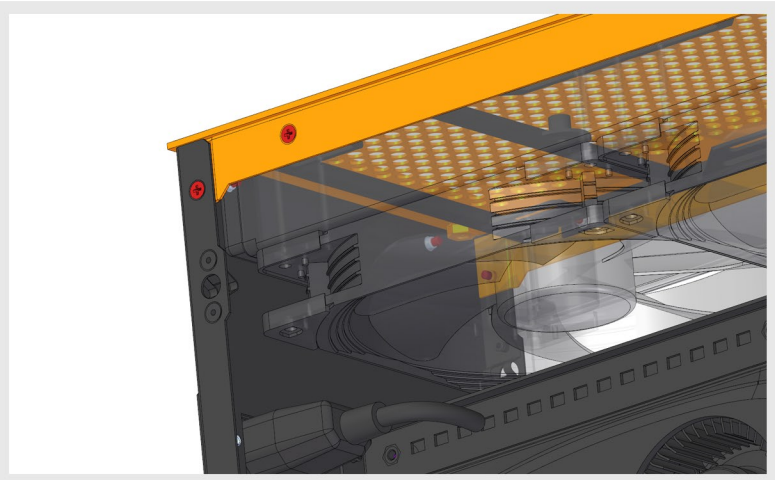
When assembling the top of your SM570 or SM580 there are a few critical relationships between parts that must be aligned. This part of the guide highlights these 4 important alignments.



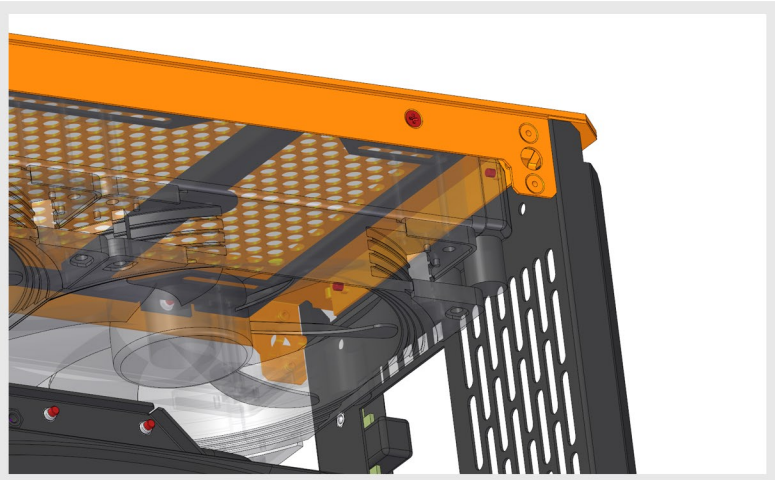
THE RADIATOR MOUNT BRACKET MUST HAVE THE ROUND KNUBS / HANDLE MOUNTS POINTING TO FRONT OF THE CASE.



FLANGE ON REAR EDGE OF TOP MUST GO ON THE OUTSIDE OF THE REAR OF THE CASE.



THE JOGGLED TABS ON EITHER SIDE OF THE BACK END OF THE TOP MUST BE SET INSIDE THE CASE FRAME.



THE FLANGE ON THE FRONT OF THE TOP ASSEMBLY MUST SIT TO THE INSIDE OF THE CASE.